

# City of Saint Francis

JUNE 2015

## From Your Mayor

I send you warm wishes for a great summer season, we all really need it after a cold winter without much of a spring! Once again thank you for your cooperation with our City Wide reevaluation process. I reported to the Plan Commission on April 22<sup>nd</sup>, when the reevaluation is completed I would like to put together a full report on the results of the process by neighborhood for the City Council and citizens. Through the Smart Growth planning process we now have neighborhood designations prepared that would allow us to discuss the details of change in each neighborhood. That leads me to the update on development and the Smart Growth/Comprehensive Plan below.



**Mayor**  
CoryAnn  
St. Marie-Carls  
414.255-8555 H  
414-399-0797 C  
(feel free to call or text)

**UPDATE - CITY SMART GROWTH PLAN:** I am happy to report that interest in our Community and potential development is now on the rise. In addition, we have an RFI (*Request for Information*) out to developers to submit ideas for our old City Hall Nicholson Avenue building. This development, of course, would get our tax base in a growth mode for balance and benefit to all. Keep in touch anytime if you have questions on this and feel free to attend the Community Development Authority meetings and Plan Commission meetings. Those dates and agendas are available on the City's website.

The City of St. Francis Smart Growth Plan that we began updating in 2013 now has 3 chapters completed and we are now contracted with Graef, an engineering and planning firm, to complete the remaining 7 chapters in 2015. The Smart Growth Plan refers to the development and implementation of a Comprehensive Plan for the City that will provide guidance for the future. The State of Wisconsin mandates the plan be done every 10 years and outlines Land Use, Economic Development, Housing, Transportation, Utilities and Community Facilities, Natural and Cultural Resources, Intergovernmental Cooperation. It also outlines how to follow the guidelines of the plan and implementation. The Comp Plan also identifies issues and opportunities for the City. The Plan Commission will be discussing and working on this at upcoming meetings, so please feel free to attend. Sign up on our Website for meeting notifications to get an email about the meetings by clicking on "NOTIFY ME" at [www.stfranciswi.org](http://www.stfranciswi.org) Let me know if you would like copies of the 3 completed chapters of the Comprehensive Plan and I can arrange to get them to you.

**SIGN UP FOR "NOTIFY ME"** on our website to receive notifications on other City of St. Francis meetings including the Common Council meetings. When you sign up you will get notifications when an agenda is posted on our Website so you can review it. I invite you to sign up! By reading agendas such as the Common Council agendas you can find out many details of activities the Council is working on in your City, also I put a "Mayor's Update" in each Council Agenda to zero in a bit on even more topics of interest.

(Continued on Page 14)

### City Officials

#### District 1

Sue Bostedt

bostedt@stfransiwi.org  
414.313.1084

Steve Wattawa

wattawaS@stfransiwi.org  
414.481.7033

#### District 2

Council President

Donald Brickner

bricknerD@stfransiwi.org  
414.482.0514

Michael McSweeney

mcsweeneyM@stfransiwi.org  
414.870.6045

#### District 3

Debbie Fliss

flissD@stfransiwi.org  
414.481.6943

Ray Klug

Ray.Klug@stfransiwi.org  
414.294.4745

#### Municipal Judge

Honorable Peter Hemmer  
414.481.2300 Ext 4315

ST. FRANCIS CIVIC CENTER

POLICE • CITY HALL • HISTORICAL SOCIETY • FIRE

EST. 2014

## St. Francis 4th of July Celebration

It all starts at the Civic Center site on Howard Avenue & continues at Vretenar Memorial Park: 4224 S. Kirkwood Avenue.

Our City of St. Francis' 4<sup>th</sup> of July Celebration activities offer a truly fun and affordable way to celebrate our Nations Birthday. We look forward to seeing you on the 4<sup>th</sup> of July and in and around our community during the summer season. Summer in St. Francis is brought to you by many wonderful volunteers new and old that have dedicated their lives to making St. Francis the best it can be!

**-9:00a.m. Gather at Lipton and Howard Avenues for Parade Line up at the new Civic Center.**

*This is our annual Red, White and Blue community and youth parade...just decorate to participate  
Businesses and groups are invited to have a float or unit – call the number below to register.*

**-9:30a.m. – Judging of Bikes/Trikes/Wagons - decorate your own way, judging by Miss St. Francis with Trophies!**

*Many first ever trophies have been awarded to our St. Francis youth! – up to 12 years old*

**-10:00a.m. – Parade begins – Howard to Packard to Lunham ending in Vretenar Memorial Park**

**-10:30a.m. – Ice Cream cups for everyone distributed at the park – Lunham Avenue entrance**

**----- Park Concessions Open (closes at 9:00p.m.) – Low family priced food for everyone!**

*Hamburgers, Brats, Hot Dogs, Nachos, Popcorn, Ice Pops, Water & Soda, – Beer/Wine cooler concession tent also opens - concessions support July 4<sup>th</sup> festivities and volunteer groups who help for the day.*

**----- Visit the St. Francis Historical Society tables– Meet & greet until 1pm**

**-11:00a.m. – Opening Ceremony, Flag Raising Ceremony –**

**Distribution of Parade Trophies (Bikes/Trikes/Wagons– 1st /2nd/3rd place in each category)**

**-11:30a.m. to 4p.m. – Inflatables by Music on the Move Plus & Jo Don Farms Petting Zoo**

**-11:30a.m. to 5:00pm – Free Children's Games (ages 4-10) & Children's Craft Barn**

**-12:00p.m. – Sign up for Horse Shoe Tournament—**

*at the horseshoe pits*

**-1:00p.m. – Horse Shoe Tournament begins**

**-1:30p.m. – Talent Show (park band shell) – youth of our community show your stuff (ages 4-18)**

*Call number below for information*

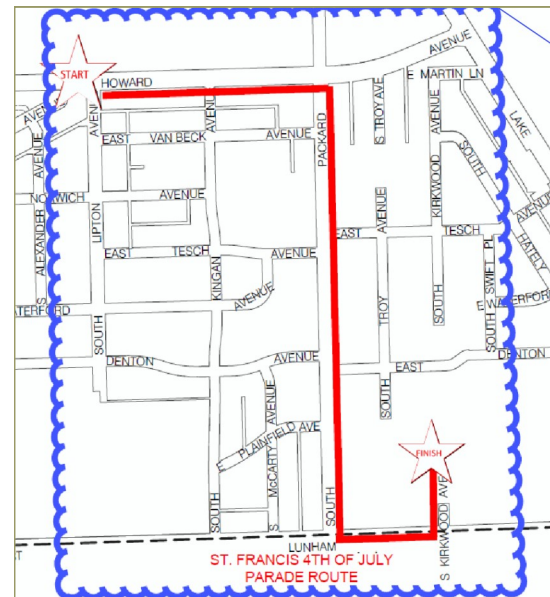
**-5:30p.m – 9:00p.m. Live Music with “76 Juliet”**

*(Talent Associates, Inc.)*

**-9:15p.m. – FIREWORKS**

*\*\* Please notes that ALL times are approximate & subject to change*

**Further information and applications are available at the Civic Center and the Library. Call Chair, Gail Kolvenbach with questions 414-744-3053.**

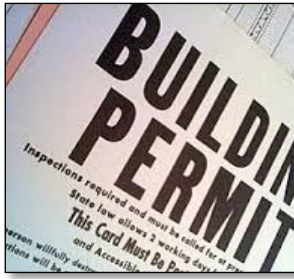


**CONCESSIONS ARE AVAILABLE THROUGHOUT THE DAY AT FAMILY AFFORDABLE PRICES!**

***Please Leave Your Grills & Coolers at Home– Thank You!!***

***Proceeds Go Towards Future 4th of July Celebrations.***

***ALL EVENTS SPONSORED BY THE CITY OF ST. FRANCIS & LOCAL BUSINESSES***



**The Building Inspector's general office hours are Monday through Friday 8a-9a and 1p-2p and by appointment**

## Building Inspector

### **Note: Fence Height Code Change With Respect to Retaining Walls.**

The height of a fence constructed or existing within three feet (3') of a retaining wall shall be determined by adding the height of said retaining wall to the height of the fence as calculated by measuring from grade at the finish side of the fence no further than four inches horizontally from fence to the highest point on the structure. The height of the retaining wall, however, will not be added to the height of the fence if the retaining wall is setback three feet (3') or more from the property line and the fence being measured is setback an additional three feet (3') or more from said retaining wall.

The City website has accessory building, deck, pool and fence information for your building project guidelines. Information on asbestos, lead, mold and radon gas in the home is available on the City website under the Inspection Department tab. There is a link available for a Milwaukee County Home Repair program available for income qualified individuals.

Permits are required for the following: New construction, homes, additions, garages, sheds, pools, spas, decks, porches, signs, retaining walls, fences, fireplaces (wood or gas) wood burners, structural alterations, furnace & air conditioner installations, reroofing, residing, window replacements requiring opening enlargement, basement rec rooms and bedrooms.

Bring in as many details of your project as possible. Structural details are required, with dimensions and types and sizes of lumber. Location of structures in the yard are critical as well, because building and zoning codes require certain setbacks depending on the project. Inspections are required for footings/foundations, rough frame, electrical, plumbing, insulation and final building, electrical and plumbing.

**Pools-** All pools require a permit except pools 2 feet or less in depth which are temporary and easily removable. All pools are required to be located in the rear yard. They shall not be located

within 4 feet of any other structure or object. Access shall be limited by fencing, removable or lockable ladders or steps. Complete codes available from the Inspection Department or Municipal Code Online.

### **Residential trash containers and pickup**

Time of placement of containers. Refuse containers shall be placed at the point of collection by the owner, tenant, lessee or occupant of the premises not more than 24 hours prior to collection and shall be removed therefrom, in the case of curbside collection, not more than 12 hours after collection. The person so placing the containers shall familiarize himself with the collection schedule and place and remove the containers so that a neat and orderly appearance shall be maintained. Such person shall keep the containers out of the traveled portion of the street or alley and prevent the contents from spilling. **Containers shall not be placed and stored in the following manner:**

**In the front yard. In the side yard, if facing any City street. Unless at least 15 feet from any residence.**

Parking in residential areas- **Parking is not allowed on grass per Municipal Code. Vehicles are to be parked on vegetation free gravel, concrete, asphalt or paving brick.** Automobile parking is allowed in the rear yard not to exceed 50% of actual area, but not more than 6 vehicles. Parking is allowed in the front yard on a driveway leading to rear or side yard parking. Vehicles are to be parked on vegetation free gravel, concrete, asphalt or paving brick.

**Diverting water from downspouts and sump pumps** directly onto neighboring or city right of way is prohibited. Water from these sources are to be directed to the front or rear yard land and dissipated on lawn areas before draining onto city right of way. Extensions of downspouts and sump pumps are allowed to be 3 feet from the front or rear of the building. Extensions beyond this require Plumbing Inspector approval.



**Our Community Resource Officers continue to offer quality programs that are meant to bring the city and families together in a positive way. You are invited to join us at Movie Night on Friday July 17<sup>th</sup> at Milton Vretenar Municipal Park**

## Police Department

Summertime brings an increase in a variety of activities and entertainment. The St. Francis Police Department depends on your assistance and cooperation in maintaining a safe community for all to enjoy. It is important when enjoying the parks and bike paths along the lakefront and elsewhere to be aware of your surroundings and go with a friend or partner. Please be reminded that unattended vehicles that are parked in recreational areas have been targeted for valuables left inside.

It is important for children to have proper supervision when enjoying their summertime activities. It is important that we don't assume someone else is caring for them. All motorists are responsible for an increased awareness in regards to child safety, bicycle safety, and motorcycle safety. The St. Francis Police Department continues to utilize grant monies for traffic enforcement. Paying attention to speed limits and staying attentive helps avoid accidents and potential injuries or death.

Our elected officials have established ordinances over the years that if utilized will help in maintaining a high standard of living. We expect people to know and follow these ordinances. Current ordinances don't allow for

excessive noise from either homes, vehicles, or business establishments. We also have a nuisance ordinance that allows for protective services to charge for their services when three or more contacts have occurred in a thirty day period. Common courtesies and respect go a long way in avoiding neighbor trouble and problems. We need your assistance in reporting violations and suspicious activity.

Our Community Resource Officers continue to offer quality programs that are meant to bring the city and families together in a positive way. You are invited to join us at Movie Night on Friday July 17<sup>th</sup> at Milton Vretenar Municipal Park. Admission is free with food and refreshments at a reasonable cost. We are very proud to announce St. Francis National Night Out placed #1 in the Nation last year for cities our size. A special thanks to Officer Dimitri Kamolov and Officer Shane Czerniakowski who along with many volunteers made this possible. This year's National Night Out celebration will be held on Wednesday August 5<sup>th</sup> at Milton Vretenar Municipal Park. There will be Law Enforcement displays, exhibits, and informational booths for all to enjoy.

Contact our department if interested in becoming part of our Neighborhood Watch Program or Crime Free Multi Housing Program that assists property managers and owners in tenant landlord issues. We also continue to offer daily checks of your home while on vacation and upon request.

***The St. Francis Police Department is your partner in assuring a fun and safe summer.***

Please join us on Facebook or check our website at [www.stfrancispolice.org](http://www.stfrancispolice.org) for updates, announcements and other information throughout the year.

St. Francis Police Department



Recognition by Milwaukee County Officials for our St. Francis National Night Out - First Place finish Nationally for 2014



# St. Francis Arts Council Summer Concert Series 2015

Milt Vretenar Memorial Park  
Packard and Denton Avenue

\*\*\* We will be observing National Night Out during the concert on August 5th \*\*\*

**Wednesday, June 24, 2015**  
**\*\* Please Note Our Later Start Date\*\***  
No Rain Date  
7:00-9:30 p.m.  
**Random Maxx**  
*70's to Current pop/rock Music*  
\*\*\*\*\*

**Wednesday, July 8, 2015**  
No Rain Date  
7:00-9:30 p.m.  
**Sensations**  
*Rock & Roll Music*  
\*\*\*\*\*

**Wednesday, July 22, 2015**  
No Rain Date  
7:00-9:30 p.m.  
**Rhythm Kings**  
*Rock, Jazz, Blues & Disco*  
\*\*\*\*\*

**Wednesday, August 5, 2015**  
**National Night Out**  
Rain Date: Thursday, August 6, 2015  
7:00-9:30 p.m.  
**Larry Lynn**  
*Great Variety Music*  
\*\*\*\*\*

**Wednesday, August 19, 2015**  
No Rain Date  
7:00-9:30 p.m.  
**Rocky Mountain Oyster Band**  
*Variety Country Music*

**\*\*\* Season Specials \*\*\***

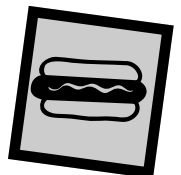
**Wednesday, June 24th - Free Ice Cream**

**All proceeds from the sale of our concessions pay for the cost of the entertainment. Thank you for your support**  
**FOOD SERVICES OPEN AT 6:30 PM**

**Ordinance No. 637 prohibits the carry-in of alcoholic beverages.**

See our summer schedule on the St. Francis Day's Website [www.stfrancisdays.com](http://www.stfrancisdays.com)

**In the event of inclement weather please call St. Francis Civic Center (481-2300) to get information on that evening's performance.**



## Fire Department

Let's say goodbye to the frost and cold (at least for a little while) and enjoy the nice weather and time with our families that we work so hard for. While we're making the most of our warm weather, let's be careful and take a minute to think about safety. Not just any safety, Grill Safety.



- One-quarter of the thermal burn injuries were children under 5 years old. These were typically contact burns not flame burns.
- One third of the injuries were incurred from lighting the grill. Lighters are tools for adults, not toys for kids.
- Gasoline or lighter fluid was a factor in roughly one-quarter of the charcoal or wood burning grill burns.

So there are some things we can do to keep ourselves and our family safe this Season of Sizzle.

- All barbeque grills must be used outside in a well ventilated area. Confined space is a fire hazard and it can also put out toxic fumes dangerous to inhalation.
- Position the grill well away from combustible objects- buildings, fences, deck railings and landscaping can easily ignite.
- Be sure to place the grill a safe distance from outside activities like play areas and foot traffic. It's best to establish a 3 foot distance around your grill.
- The City of St. Francis regulates the use of grills in multiple-family dwellings by ordinance. The use of any fire or open flame is prohibited on any balcony above ground level, or on any ground level patio within 15 feet of the structure.
- Plan ahead. The less rushing around to get things done, the safer it will be for everyone.

### **Facts & Figures**

- In 2007-2011, U.S. fire departments responded to an average of 8,800 home and outside fires. These 8,800 fires caused an annual average of 10 civilian deaths, 140 civilian injuries and \$96 million in direct property damage.
- More than one-quarter (27%) of the home structure fires involving grills started on a courtyard, terrace or patio, 29% started on an exterior balcony or open porch, and 6% started in the kitchen.
- In almost half (43%) of the home outdoor fires in which grills were involved, half (51%) of the outside gas grills, and 29% of gas grill structure fires, the fire started when a flammable or combustible gas or liquid caught fire.

More than any tool available to you, nothing can take the place of common sense. Distractions don't just burn the food, they can cause injury as well. Be safe and have fun.

---

## Garbage News

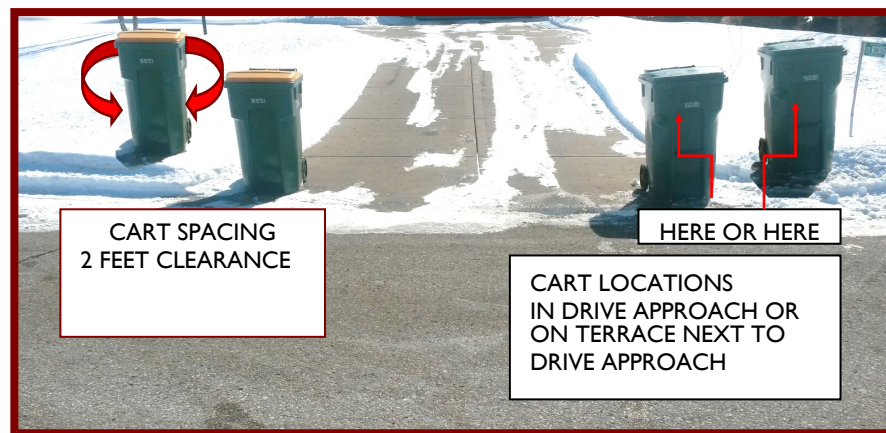
By now, everyone who was scheduled to get new carts should have received them and should be using them. If you have questions or issues with your cart or service by Waste Management, please call 888-960-0008. Be sure to tell the customer service representative that you are in St. Francis Wisconsin.

Also, there have been some questions regarding cart placement. The carts should ideally be placed on either side of the driveway on the terrace or in the approach if you have a driveway and have a 2 foot clear area around the cart for the automatic arm. If you have an alley, the carts need to be at the edge of the alley (not in the alley) and at least 2 feet apart to accommodate the automatic arm.

Please be aware that State Statute prohibits parking within 4 feet of either side of a driveway. Also note that garbage and recycle collection cannot occur if a car is blocking the carts. If you see your neighbors' carts out, please do not block them with your car. If everyone works together, garbage and recycle collection will go smoothly and everyone will get proper service.

Lastly, while bulk collection is now collected once per month, bulk items still must adhere to the collection rules. Garbage/recycle carts and bulk items cannot be placed out for collection more than 24 hours in advance of your regular collection day and carts or any items which were not collected must be removed within 12 hours after collection has occurred. Violations of this portion of City ordinance can receive a fine. Be sure to check the collection schedule that was attached to your cart when it was delivered or check the City website for bulk collection weeks.

Thank you for making the switch to automated collection a success!



## MOBILE HOUSEHOLD HAZARDOUS WASTE COLLECTION SITES : 2015

**JUNE 21**  
SHOREWOOD HIGH SCHOOL  
8:00 a.m. - 2:00 p.m.  
1701 E. Capitol Dr.

**JULY 26**  
UIHLEIN SOCCER PARK  
8:00 a.m. - 2:00 p.m.  
7101 W. Good Hope Rd.  
(parking lot on west side of Soccer Park)

**SEPTEMBER 21**  
WAUWATOSA CITY HALL  
8:00 a.m. - 2:00 p.m.  
7725 W. North Ave.

**OCTOBER 11: 11am - 6pm**  
**OCTOBER 12: 8am - 2pm**  
STATE FAIR PARK  
Gate 8 (off 76th Street)

## St. Francis Library



The St. Francis Public Library was pleased to honor Barbara Suhm and her service to the library by christening the youth room's book boat the *S. S. Barbara*. Library staff held a naming contest for the boat, which was added to the children's area last fall. One person suggested S.S. Barbara, in recognition of Barb – who was our first children's librarian. We thought it was a terrific idea and were thrilled to see that the voting public agreed! The new boat name was announced at the Celebrate the World culture fair, and the name will be permanently added to the boat this month. Barb was hired in 1987 by Helen Hachmeister, the original library director, and built the children's collection and programming from scratch. Believe it or not, Barb still works for the library and can be found at the reference desk in the youth room one night a week. Congratulations, Barb, and thanks for your 28 years of serving our community!

### Summer Reading is Flying Your Way!

Summer is the time to read for fun! Kids, find your super powers this summer with the free 2015 Summer Reading Program at the St. Francis Library: "Every Hero Has a Story" and "Unmask!" (for Teens). Both programs are sure to inspire a love of reading and learning, and help your child bridge the summer reading gap. Reading during the summer will prevent children from losing hard-earned reading skills. Everyone is invited to the kick off program at Library Park on the last day of Willow Glen School, Thursday, June 11 at 3:30 – 4:30 pm. It'll be a picnic and a party just for you.



Calling all superheroes, and those wanting to be super. Like the Human Torch, you can "flame on!" by earning prizes just for reading. You'll say, "Shazam!" watching Thursday performers, who are all "four star", including Juggler Steve Girman on June 18 at 1:30 pm.

There's a lot more planned. Find out more information by visiting our website [www.stfrancislibrary.org](http://www.stfrancislibrary.org) or by visiting the library.

### The Return of the Adult Summer Reading Program!

The St. Francis Library is pleased to announce that it will be offering the popular "Adult Summer Reading Program" again this year. It is as simple as "read a book, fill out a review/entry form and enter to win fantastic prizes". A few of this year's generous prize donors include: St. Francis Brewery, Lovely Salon, Milwaukee Art Museum, Snap Fitness and more!



Celebrating The World Culture Fair



# St. Francis Recreation

3680 Kinnickinnic Avenue  
St. Francis, WI 53235  
414-482-8404 414-482-8484

<http://www.stfrancissschools.org/schools/recreation/>

***Dedicated to providing programs and activities for  
community involvement and growth. Come check us out!***

## Summer Cool

**Session I: June 15th - July 2**

**Session II: July 6 - July 24th**

Classes held from 8:00 a.m. - 5:00 p.m.

Swimming, Volleyball, Soccer, Tennis, Basketball, Floor Hockey, Flag Football, Poms and more!  
**Complete course offerings available online or at the St. Francis Public Library.**

## New Offerings!!

### Boys and Girls Basketball Skill Development

This class is for boys and girls entering 6th through 9th grade.

Prepare to play at the Jr. High and High School levels!!

Saturday mornings 9:00 -10:30, June 20th through August 1st.

### Outdoor Fun

In this class we will enjoy our Wisconsin summer weather playing games such as ladder ball, bag toss, Frisbee golf, washer toss and much more!!

It is open to all school age children from 2:00 to 2:45 pm during both sessions of Summer Cool.

### Starter Sports & Sports Sampler

These classes offer the opportunity to try an assortment of sports and games.

Starter Sports is open to boys and girls in grades K4 through 3rd grade.

Sports Sampler is open to boys and girls in grades 4th through 8th grade.

Both classes are held in Session I and Session II Summer Cool from 2:45 to 3:45 pm

### Snack and Games

This class is designed to create an educational, fun and relaxed atmosphere for students grades K4 through 8th grade.

Students will enjoy a variety of cooperative games / activities from 3:55 - 5:00 pm both sessions of Summer Cool.

## More Recreation Fun!!

**Karate** is offered to students ages 5 to adult on Tuesday evenings from 6:30 to 7:45.

**Beginning, Intermediate and Advanced Judo** is offered on Saturday mornings from 9:00 to 12:00.

**Water Aerobics** is offered for adults on Monday and Wednesday evenings.

5:15 - 6:00 pm or 6:00 - 6:45pm

**Senior Swim** is open on Wednesday mornings from 10:00 to 11:30 until June 10th.

John Kloppenburg, Recreation Supervisor  
jklopp@sfds.k12.wi.us 482-8486

Peggy Pfeffer, Recreation Secretary  
ppfeffe@sfds.k12.wi.us 482-8484



# Engineering & Department of Public Works

## 2015 Fall Leaf Collection:

The City will be collecting leaves this year starting Monday, September 28, 2015. The last day to put leaves in the gutter will be Sunday, November 29, 2015. The leaves are collected citywide beginning on one side of the City and working toward the opposite side. It takes about one week during the peak of leaf collection to make one trip throughout the City. Please place only leaves in the gutter; no branches or garden waste.

## Street Light Out:

To report a street light that is out, please call We Energies at 1-800-662-4797 or go to the We Energies website at [www.we-energies.com](http://www.we-energies.com). Click on the tab at the top labeled "Outages and Safety". The page will then show the different types of outages to report. Click on "Street light or area light not working".

The next page will give you a button to report the outage online or a phone number to call. If you choose to report online, click the button. The next page will ask you for an address or a pole number and has a picture of the different tags with the pole numbers for reporting.

## Special Pick-Ups

Brush or tree stumps can be picked up by the City for a fee. Call 481-2300 during office hours for information.

## Storm Damage

After a storm, large wind damaged branches will be picked up by the City at no cost. Call 481-2300 during office hours for information.

## Help Keep Our City Streets And Alleys Clean

Many of the alleys are overgrown with weeds/shrubs or cluttered with debris/trash. This condition provides a habitat for mice, rats, other vermin, as well as detracts from the overall appearance of the City. Please cut the weeds, trim the shrubs, dispose of the trash. Also, do not rake/place anything in the gutter other than leaves during the designated leaf collection. It is a violation of City Ordinance.

## Fair Housing

The Milwaukee area HUD office has new phone numbers: 414-297-3214 extension 8301 or 8304. Also, the Department of Work Force Development Equal Rights Division has a news hotline: 1-800-765-9372.

## Water In Basement

If your sanitary sewer is backing up in your basement – this is an emergency. To speak to someone call 481-2300 Monday through Friday between 8am and 4:30pm. After hours or on weekends, call 481-2232.

## Pollution Reduction

There are many ways to help keep Lake Michigan and the Kinnickinnic River clean. Property owners can use rain barrels or rain gardens on their property to help reduce the amount of rain water that goes into the sewers and eventually to Lake Michigan or the Kinnickinnic River if you live on the southwest side of the City. Please go to <http://www.mmsd.com/gi/green-infrastructure> to get information on rail barrels and rain gardens or to <http://swwtwater.org/> for stormwater pollution reduction initiatives. The City is a partner with Sweet Water Trust.

## Recycling Collection Schedule

Legend		Recycling Collection Week							Bulk Collection Week																																																																																										
■	Holiday	S	M	T	W	T	F	S	S	M	T	W	T	F	S																																																																																				
<b>January 2015</b> <table border="1"> <tr><td>S</td><td>M</td><td>T</td><td>W</td><td>T</td><td>F</td><td>S</td><td>S</td><td>M</td><td>T</td><td>W</td><td>T</td><td>F</td><td>S</td></tr> <tr><td></td><td></td><td></td><td>1</td><td>2</td><td>3</td><td></td><td>1</td><td>2</td><td>3</td><td>4</td><td>5</td><td>6</td><td>7</td></tr> <tr><td>4</td><td>5</td><td>6</td><td>7</td><td>8</td><td>9</td><td>10</td><td></td><td></td><td></td><td></td><td></td><td></td><td></td></tr> <tr><td>11</td><td>12</td><td>13</td><td>14</td><td>15</td><td>16</td><td>17</td><td></td><td></td><td></td><td></td><td></td><td></td><td></td></tr> <tr><td>18</td><td>19</td><td>20</td><td>21</td><td>22</td><td>23</td><td>24</td><td></td><td></td><td></td><td></td><td></td><td></td><td></td></tr> <tr><td>25</td><td>26</td><td>27</td><td>28</td><td>29</td><td>30</td><td>31</td><td></td><td></td><td></td><td></td><td></td><td></td><td></td></tr> </table>																S	M	T	W	T	F	S	S	M	T	W	T	F	S				1	2	3		1	2	3	4	5	6	7	4	5	6	7	8	9	10								11	12	13	14	15	16	17								18	19	20	21	22	23	24								25	26	27	28	29	30	31							
S	M	T	W	T	F	S	S	M	T	W	T	F	S																																																																																						
			1	2	3		1	2	3	4	5	6	7																																																																																						
4	5	6	7	8	9	10																																																																																													
11	12	13	14	15	16	17																																																																																													
18	19	20	21	22	23	24																																																																																													
25	26	27	28	29	30	31																																																																																													
<b>February 2015</b> <table border="1"> <tr><td>S</td><td>M</td><td>T</td><td>W</td><td>T</td><td>F</td><td>S</td><td>S</td><td>M</td><td>T</td><td>W</td><td>T</td><td>F</td><td>S</td></tr> <tr><td></td><td></td><td></td><td></td><td></td><td></td><td></td><td>1</td><td>2</td><td>3</td><td>4</td><td>5</td><td>6</td><td>7</td></tr> <tr><td>8</td><td>9</td><td>10</td><td>11</td><td>12</td><td>13</td><td>14</td><td></td><td></td><td></td><td></td><td></td><td></td><td></td></tr> <tr><td>15</td><td>16</td><td>17</td><td>18</td><td>19</td><td>20</td><td>21</td><td></td><td></td><td></td><td></td><td></td><td></td><td></td></tr> <tr><td>22</td><td>23</td><td>24</td><td>25</td><td>26</td><td>27</td><td>28</td><td></td><td></td><td></td><td></td><td></td><td></td><td></td></tr> <tr><td>29</td><td>30</td><td></td><td></td><td></td><td></td><td></td><td></td><td></td><td></td><td></td><td></td><td></td><td></td></tr> </table>																S	M	T	W	T	F	S	S	M	T	W	T	F	S								1	2	3	4	5	6	7	8	9	10	11	12	13	14								15	16	17	18	19	20	21								22	23	24	25	26	27	28								29	30												
S	M	T	W	T	F	S	S	M	T	W	T	F	S																																																																																						
							1	2	3	4	5	6	7																																																																																						
8	9	10	11	12	13	14																																																																																													
15	16	17	18	19	20	21																																																																																													
22	23	24	25	26	27	28																																																																																													
29	30																																																																																																		
<b>March 2015</b> <table border="1"> <tr><td>S</td><td>M</td><td>T</td><td>W</td><td>T</td><td>F</td><td>S</td><td>S</td><td>M</td><td>T</td><td>W</td><td>T</td><td>F</td><td>S</td></tr> <tr><td>1</td><td>2</td><td>3</td><td>4</td><td>5</td><td>6</td><td>7</td><td></td><td></td><td></td><td></td><td></td><td></td><td></td></tr> <tr><td>8</td><td>9</td><td>10</td><td>11</td><td>12</td><td>13</td><td>14</td><td></td><td></td><td></td><td></td><td></td><td></td><td></td></tr> <tr><td>15</td><td>16</td><td>17</td><td>18</td><td>19</td><td>20</td><td>21</td><td></td><td></td><td></td><td></td><td></td><td></td><td></td></tr> <tr><td>22</td><td>23</td><td>24</td><td>25</td><td>26</td><td>27</td><td>28</td><td></td><td></td><td></td><td></td><td></td><td></td><td></td></tr> <tr><td>29</td><td>30</td><td>31</td><td></td><td></td><td></td><td></td><td></td><td></td><td></td><td></td><td></td><td></td><td></td></tr> </table>																S	M	T	W	T	F	S	S	M	T	W	T	F	S	1	2	3	4	5	6	7								8	9	10	11	12	13	14								15	16	17	18	19	20	21								22	23	24	25	26	27	28								29	30	31											
S	M	T	W	T	F	S	S	M	T	W	T	F	S																																																																																						
1	2	3	4	5	6	7																																																																																													
8	9	10	11	12	13	14																																																																																													
15	16	17	18	19	20	21																																																																																													
22	23	24	25	26	27	28																																																																																													
29	30	31																																																																																																	
<b>April 2015</b> <table border="1"> <tr><td>S</td><td>M</td><td>T</td><td>W</td><td>T</td><td>F</td><td>S</td><td>S</td><td>M</td><td>T</td><td>W</td><td>T</td><td>F</td><td>S</td></tr> <tr><td></td><td></td><td></td><td></td><td></td><td></td><td></td><td>1</td><td>2</td><td>3</td><td>4</td><td>5</td><td>6</td><td>7</td></tr> <tr><td>8</td><td>9</td><td>10</td><td>11</td><td>12</td><td>13</td><td>14</td><td></td><td></td><td></td><td></td><td></td><td></td><td></td></tr> <tr><td>15</td><td>16</td><td>17</td><td>18</td><td>19</td><td>20</td><td>21</td><td></td><td></td><td></td><td></td><td></td><td></td><td></td></tr> <tr><td>22</td><td>23</td><td>24</td><td>25</td><td>26</td><td>27</td><td>28</td><td></td><td></td><td></td><td></td><td></td><td></td><td></td></tr> <tr><td>29</td><td>30</td><td></td><td></td><td></td><td></td><td></td><td></td><td></td><td></td><td></td><td></td><td></td><td></td></tr> </table>																S	M	T	W	T	F	S	S	M	T	W	T	F	S								1	2	3	4	5	6	7	8	9	10	11	12	13	14								15	16	17	18	19	20	21								22	23	24	25	26	27	28								29	30												
S	M	T	W	T	F	S	S	M	T	W	T	F	S																																																																																						
							1	2	3	4	5	6	7																																																																																						
8	9	10	11	12	13	14																																																																																													
15	16	17	18	19	20	21																																																																																													
22	23	24	25	26	27	28																																																																																													
29	30																																																																																																		
<b>May 2015</b> <table border="1"> <tr><td>S</td><td>M</td><td>T</td><td>W</td><td>T</td><td>F</td><td>S</td><td>S</td><td>M</td><td>T</td><td>W</td><td>T</td><td>F</td><td>S</td></tr> <tr><td></td><td></td><td></td><td></td><td></td><td></td><td></td><td>1</td><td>2</td><td>3</td><td>4</td><td>5</td><td>6</td><td>7</td></tr> <tr><td>8</td><td>9</td><td>10</td><td>11</td><td>12</td><td>13</td><td>14</td><td></td><td></td><td></td><td></td><td></td><td></td><td></td></tr> <tr><td>15</td><td>16</td><td>17</td><td>18</td><td>19</td><td>20</td><td>21</td><td></td><td></td><td></td><td></td><td></td><td></td><td></td></tr> <tr><td>22</td><td>23</td><td>24</td><td>25</td><td>26</td><td>27</td><td>28</td><td></td><td></td><td></td><td></td><td></td><td></td><td></td></tr> <tr><td>29</td><td>30</td><td>31</td><td></td><td></td><td></td><td></td><td></td><td></td><td></td><td></td><td></td><td></td><td></td></tr> </table>																S	M	T	W	T	F	S	S	M	T	W	T	F	S								1	2	3	4	5	6	7	8	9	10	11	12	13	14								15	16	17	18	19	20	21								22	23	24	25	26	27	28								29	30	31											
S	M	T	W	T	F	S	S	M	T	W	T	F	S																																																																																						
							1	2	3	4	5	6	7																																																																																						
8	9	10	11	12	13	14																																																																																													
15	16	17	18	19	20	21																																																																																													
22	23	24	25	26	27	28																																																																																													
29	30	31																																																																																																	
<b>June 2015</b> <table border="1"> <tr><td>S</td><td>M</td><td>T</td><td>W</td><td>T</td><td>F</td><td>S</td><td>S</td><td>M</td><td>T</td><td>W</td><td>T</td><td>F</td><td>S</td></tr> <tr><td></td><td></td><td></td><td></td><td></td><td></td><td></td><td>1</td><td>2</td><td>3</td><td>4</td><td>5</td><td>6</td><td>7</td></tr> <tr><td>8</td><td>9</td><td>10</td><td>11</td><td>12</td><td>13</td><td>14</td><td></td><td></td><td></td><td></td><td></td><td></td><td></td></tr> <tr><td>15</td><td>16</td><td>17</td><td>18</td><td>19</td><td>20</td><td>21</td><td></td><td></td><td></td><td></td><td></td><td></td><td></td></tr> <tr><td>22</td><td>23</td><td>24</td><td>25</td><td>26</td><td>27</td><td>28</td><td></td><td></td><td></td><td></td><td></td><td></td><td></td></tr> <tr><td>29</td><td>30</td><td></td><td></td><td></td><td></td><td></td><td></td><td></td><td></td><td></td><td></td><td></td><td></td></tr> </table>																S	M	T	W	T	F	S	S	M	T	W	T	F	S								1	2	3	4	5	6	7	8	9	10	11	12	13	14								15	16	17	18	19	20	21								22	23	24	25	26	27	28								29	30												
S	M	T	W	T	F	S	S	M	T	W	T	F	S																																																																																						
							1	2	3	4	5	6	7																																																																																						
8	9	10	11	12	13	14																																																																																													
15	16	17	18	19	20	21																																																																																													
22	23	24	25	26	27	28																																																																																													
29	30																																																																																																		
<b>July 2015</b> <table border="1"> <tr><td>S</td><td>M</td><td>T</td><td>W</td><td>T</td><td>F</td><td>S</td><td>S</td><td>M</td><td>T</td><td>W</td><td>T</td><td>F</td><td>S</td></tr> <tr><td></td><td></td><td></td><td></td><td></td><td></td><td></td><td>1</td><td>2</td><td>3</td><td>4</td><td>5</td><td>6</td><td>7</td></tr> <tr><td>8</td><td>9</td><td>10</td><td>11</td><td>12</td><td>13</td><td>14</td><td></td><td></td><td></td><td></td><td></td><td></td><td></td></tr> <tr><td>15</td><td>16</td><td>17</td><td>18</td><td>19</td><td>20</td><td>21</td><td></td><td></td><td></td><td></td><td></td><td></td><td></td></tr> <tr><td>22</td><td>23</td><td>24</td><td>25</td><td>26</td><td>27</td><td>28</td><td></td><td></td><td></td><td></td><td></td><td></td><td></td></tr> <tr><td>29</td><td>30</td><td>31</td><td></td><td></td><td></td><td></td><td></td><td></td><td></td><td></td><td></td><td></td><td></td></tr> </table>																S	M	T	W	T	F	S	S	M	T	W	T	F	S								1	2	3	4	5	6	7	8	9	10	11	12	13	14								15	16	17	18	19	20	21								22	23	24	25	26	27	28								29	30	31											
S	M	T	W	T	F	S	S	M	T	W	T	F	S																																																																																						
							1	2	3	4	5	6	7																																																																																						
8	9	10	11	12	13	14																																																																																													
15	16	17	18	19	20	21																																																																																													
22	23	24	25	26	27	28																																																																																													
29	30	31																																																																																																	
<b>August 2015</b> <table border="1"> <tr><td>S</td><td>M</td><td>T</td><td>W</td><td>T</td><td>F</td><td>S</td><td>S</td><td>M</td><td>T</td><td>W</td><td>T</td><td>F</td><td>S</td></tr> <tr><td></td><td></td><td></td><td></td><td></td><td></td><td></td><td>1</td><td>2</td><td>3</td><td>4</td><td>5</td><td>6</td><td>7</td></tr> <tr><td>8</td><td>9</td><td>10</td><td>11</td><td>12</td><td>13</td><td>14</td><td></td><td></td><td></td><td></td><td></td><td></td><td></td></tr> <tr><td>15</td><td>16</td><td>17</td><td>18</td><td>19</td><td>20</td><td>21</td><td></td><td></td><td></td><td></td><td></td><td></td><td></td></tr> <tr><td>22</td><td>23</td><td>24</td><td>25</td><td>26</td><td>27</td><td>28</td><td></td><td></td><td></td><td></td><td></td><td></td><td></td></tr> <tr><td>29</td><td>30</td><td>31</td><td></td><td></td><td></td><td></td><td></td><td></td><td></td><td></td><td></td><td></td><td></td></tr> </table>																S	M	T	W	T	F	S	S	M	T	W	T	F	S								1	2	3	4	5	6	7	8	9	10	11	12	13	14								15	16	17	18	19	20	21								22	23	24	25	26	27	28								29	30	31											
S	M	T	W	T	F	S	S	M	T	W	T	F	S																																																																																						
							1	2	3	4	5	6	7																																																																																						
8	9	10	11	12	13	14																																																																																													
15	16	17	18	19	20	21																																																																																													
22	23	24	25	26	27	28																																																																																													
29	30	31																																																																																																	
<b>September 2015</b> <table border="1"> <tr><td>S</td><td>M</td><td>T</td><td>W</td><td>T</td><td>F</td><td>S</td><td>S</td><td>M</td><td>T</td><td>W</td><td>T</td><td>F</td><td>S</td></tr> <tr><td></td><td></td><td></td><td></td><td></td><td></td><td></td><td>1</td><td>2</td><td>3</td><td>4</td><td>5</td><td>6</td><td>7</td></tr> <tr><td>8</td><td>9</td><td>10</td><td>11</td><td>12</td><td>13</td><td>14</td><td></td><td></td><td></td><td></td><td></td><td></td><td></td></tr> <tr><td>15</td><td>16</td><td>17</td><td>18</td><td>19</td><td>20</td><td>21</td><td></td><td></td><td></td><td></td><td></td><td></td><td></td></tr> <tr><td>22</td><td>23</td><td>24</td><td>25</td><td>26</td><td>27</td><td>28</td><td></td><td></td><td></td><td></td><td></td><td></td><td></td></tr> <tr><td>29</td><td>30</td><td></td><td></td><td></td><td></td><td></td><td></td><td></td><td></td><td></td><td></td><td></td><td></td></tr> </table>																S	M	T	W	T	F	S	S	M	T	W	T	F	S								1	2	3	4	5	6	7	8	9	10	11	12	13	14								15	16	17	18	19	20	21								22	23	24	25	26	27	28								29	30												
S	M	T	W	T	F	S	S	M	T	W	T	F	S																																																																																						
							1	2	3	4	5	6	7																																																																																						
8	9	10	11	12	13	14																																																																																													
15	16	17	18	19	20	21																																																																																													
22	23	24	25	26	27	28																																																																																													
29	30																																																																																																		
<b>October 2015</b> <table border="1"> <tr><td>S</td><td>M</td><td>T</td><td>W</td><td>T</td><td>F</td><td>S</td><td>S</td><td>M</td><td>T</td><td>W</td><td>T</td><td>F</td><td>S</td></tr> <tr><td></td><td></td><td></td><td></td><td></td><td></td><td></td><td>1</td><td>2</td><td>3</td><td>4</td><td>5</td><td>6</td><td>7</td></tr> <tr><td>8</td><td>9</td><td>10</td><td>11</td><td>12</td><td>13</td><td>14</td><td></td><td></td><td></td><td></td><td></td><td></td><td></td></tr> <tr><td>15</td><td>16</td><td>17</td><td>18</td><td>19</td><td>20</td><td>21</td><td></td><td></td><td></td><td></td><td></td><td></td><td></td></tr> <tr><td>22</td><td>23</td><td>24</td><td>25</td><td>26</td><td>27</td><td>28</td><td></td><td></td><td></td><td></td><td></td><td></td><td></td></tr> <tr><td>29</td><td>30</td><td>31</td><td></td><td></td><td></td><td></td><td></td><td></td><td></td><td></td><td></td><td></td><td></td></tr> </table>																S	M	T	W	T	F	S	S	M	T	W	T	F	S								1	2	3	4	5	6	7	8	9	10	11	12	13	14								15	16	17	18	19	20	21								22	23	24	25	26	27	28								29	30	31											
S	M	T	W	T	F	S	S	M	T	W	T	F	S																																																																																						
							1	2	3	4	5	6	7																																																																																						
8	9	10	11	12	13	14																																																																																													
15	16	17	18	19	20	21																																																																																													
22	23	24	25	26	27	28																																																																																													
29	30	31																																																																																																	
<b>November 2015</b> <table border="1"> <tr><td>S</td><td>M</td><td>T</td><td>W</td><td>T</td><td>F</td><td>S</td><td>S</td><td>M</td><td>T</td><td>W</td><td>T</td><td>F</td><td>S</td></tr> <tr><td></td><td></td><td></td><td></td><td></td><td></td><td></td><td>1</td><td>2</td><td>3</td><td>4</td><td>5</td><td>6</td><td>7</td></tr> <tr><td>8</td><td>9</td><td>10</td><td>11</td><td>12</td><td>13</td><td>14</td><td></td><td></td><td></td><td></td><td></td><td></td><td></td></tr> <tr><td>15</td><td>16</td><td>17</td><td>18</td><td>19</td><td>20</td><td>21</td><td></td><td></td><td></td><td></td><td></td><td></td><td></td></tr> <tr><td>22</td><td>23</td><td>24</td><td>25</td><td>26</td><td>27</td><td>28</td><td></td><td></td><td></td><td></td><td></td><td></td><td></td></tr> <tr><td>29</td><td>30</td><td></td><td></td><td></td><td></td><td></td><td></td><td></td><td></td><td></td><td></td><td></td><td></td></tr> </table>																S	M	T	W	T	F	S	S	M	T	W	T	F	S								1	2	3	4	5	6	7	8	9	10	11	12	13	14								15	16	17	18	19	20	21								22	23	24	25	26	27	28								29	30												
S	M	T	W	T	F	S	S	M	T	W	T	F	S																																																																																						
							1	2	3	4	5	6	7																																																																																						
8	9	10	11	12	13	14																																																																																													
15	16	17	18	19	20	21																																																																																													
22	23	24	25	26	27	28																																																																																													
29	30																																																																																																		
<b>December 2015</b> <table border="1"> <tr><td>S</td><td>M</td><td>T</td><td>W</td><td>T</td><td>F</td><td>S</td><td>S</td><td>M</td><td>T</td><td>W</td><td>T</td><td>F</td><td>S</td></tr> <tr><td></td><td></td><td></td><td></td><td></td><td></td><td></td><td>1</td><td>2</td><td>3</td><td>4</td><td>5</td><td>6</td><td>7</td></tr> <tr><td>8</td><td>9</td><td>10</td><td>11</td><td>12</td><td>13</td><td>14</td><td></td><td></td><td></td><td></td><td></td><td></td><td></td></tr> <tr><td>15</td><td>16</td><td>17</td><td>18</td><td>19</td><td>20</td><td>21</td><td></td><td></td><td></td><td></td><td></td><td></td><td></td></tr> <tr><td>22</td><td>23</td><td>24</td><td>25</td><td>26</td><td>27</td><td>28</td><td></td><td></td><td></td><td></td><td></td><td></td><td></td></tr> <tr><td>29</td><td>30</td><td>31</td><td></td><td></td><td></td><td></td><td></td><td></td><td></td><td></td><td></td><td></td><td></td></tr> </table>																S	M	T	W	T	F	S	S	M	T	W	T	F	S								1	2	3	4	5	6	7	8	9	10	11	12	13	14								15	16	17	18	19	20	21								22	23	24	25	26	27	28								29	30	31											
S	M	T	W	T	F	S	S	M	T	W	T	F	S																																																																																						
							1	2	3	4	5	6	7																																																																																						
8	9	10	11	12	13	14																																																																																													
15	16	17	18	19	20	21																																																																																													
22	23	24	25	26	27	28																																																																																													
29	30	31																																																																																																	

## 2015 Trash and Recycling Schedule

Waste Management will continue to collect trash weekly on your regularly scheduled day. Be sure to have your trash at the curb no later than 6:00 a.m. Waste Management will also collect recycling on the same day as your trash collection, every other week as indicated by the grey weeks on the adjacent calendar.

### Holidays

Waste and recycling collection service will be delayed one day if a holiday falls on or before your collection day. For example, Wednesday customers will be serviced on Thursday.

- Memorial Day** - Monday May 25, 2015
- Labor Day** - Monday September 7, 2015
- Thanksgiving Day** - Thursday, November 26, 2015
- Christmas Day** - Wednesday, December 23, 2015
- New Year's Day** - Friday, January 1, 2016

### Curbside Timing

Please have your cart at the curb no later than 6:00 a.m. on the day of collection. Please do not place any carts near your mailbox and allow at least two feet between the carts if possible.

### Missed Collections

Despite our best efforts, we occasionally miss scheduled collections. If we do, please call us as soon as you can. We'll try to return on the same day to pick it up, without charge. If our driver has already left the City of St. Francis, we'll pick up the missed stop the following day.

**For further information, please contact Waste Management at (888) 960-0008 or [wmeservice@wm.com](mailto:wmeservice@wm.com)**

## Saint Francis Health Department

### **FREE Blood Pressure Screenings!**

#### **Faircrest**

#### **Apts:**

*2nd Tuesday*

1920 E. Tripoli

10a-11a

#### **Thompson**

#### **Meadows:**

*3rd Tuesday*

3120 E.

Norwich

9:30a-10:30a

#### **The Health**

#### **Dept.**

*4th Tuesday*

3400 E. Howard

9a-10:30a

### **WALK TO THE DAYS FOR HEALTH**

This year the WALK will be on Sunday, September 6, 2015. It will begin at the St. Francis Civic Center, 3400 East Howard Avenue. The route will be new, as well as the format of the WALK. Registration begins at 9:30 AM and the walk kicks off at 10 am. Watch the City's Facebook page for more exciting Walk news! Hope to see you there. Families are encouraged.

### **BEACH WATER TESTING AT BAY**

**VIEW BEACH** Begins on Memorial Day and continues through Labor Day. The water is tested for high levels of E Coli bacteria. Signs are posted at the beach alerting swimmers as to the quality of the water. The results are also posted at: [www.wibeaches.us](http://www.wibeaches.us) or you can contact the Health Department for results.

### **PREPARE YOURSELF AND FAMILY FOR HEAT WAVE**

In recent years, excessive heat has been the cause of more deaths and hospitalizations than any other weather event. During a Heat Wave, temperatures are usually 10 degrees above normal and last for a long period of time. During this time there are several actions you can take to keep yourself and your family safe and healthy:

- Never leave children or pets alone in an enclosed vehicle.
- Drink plenty of fluids, even if you do not feel thirsty, avoid alcohol or caffeine.
- Eat small meals and eat more often.
- Wear loose-fitting, lightweight, light colored clothing. Avoid dark colors as they tend to absorb the sun's rays.
- Postpone outdoor games and activities.
- Take frequent breaks if you must work outside.
- Slow down, stay indoors and avoid strenuous exercise during the hottest part of the day. Malls are a GREAT place to get exercise during a HEAT WAVE.
- Check on family, friends and neighbors who do not have air conditioning or spend much of their time alone.

### **PICNIC SAFETY**

Food poisoning usually hits its peak in the summer months. Any food that has mayonnaise, dairy or eggs in it and any meat product can develop bacteria after being out of the refrigerator for only a couple of hours.

To prevent food poisoning the U.S. Department of Agriculture advises you to:

- ◇ **CLEAN:** Wash your hands and the surfaces where you will be preparing food.
- ◇ **SEPARATE:** Wrap raw meat and keep it away from other food items.
- ◇ **COOK:** Use a meat thermometer. Meats should be cooked at a minimum of 145 degree, Ground Beef and Pork to 160 degrees and poultry to 165 degrees.
- ◇ **CHILL:** Keep everything refrigerated as long as possible. Store perishable picnic foods in an insulated cooler packed with ice. Follow the "last in, first out" rule. The food item you will eat first should be on the top of the cooler. If you should become ill (nausea, vomiting, diarrhea) avoid eating solid foods, drink small frequent drinks of clear liquids to keep you hydrated. When symptoms stop, slowly introduce food back into your diet. Contact your physician if symptoms persist.

Don't forget, children entering K5, boosters are required prior to the start of school, boosters are: Dtap, Polio, MMR and Varicella vaccines. Students entering 6<sup>th</sup> grade also need to get a booster of Tdap vaccine prior to the start of school.

If you do not have health insurance or you are on Badger Care, you may receive your vaccinations at the St. Francis Health Department at no cost. Call for an appointment.

The St. Francis Health Department offers many services to residents. Please contact us if you have any questions at 414-481-2300 x 4313.

## St. Francis Garbage Information

Clean-Up & Garbage Collection Rules: Alley/Curb Service: The \*NEW\* Waste Management provided carts (green for garbage, blue for recycle) shall be placed for collection at ground level at the street/alley but not in the street/alley as accessible as possible to the alley or curb line. Carts may not be placed more than 24 hours prior to collection and shall be removed within 12 hours after collection. **Remember materials must be out by 6:00 a.m. on collection day or collection cannot be guaranteed.**

### Weekly Cart Garbage Collection Items

Garbage (refuse/rubbish/trash) must be properly contained in the green cart provided by Waste Management. Garbage should still be bagged, not loose in the cart. If all of the garbage does not fit in the cart, save it for the next week. Garbage includes: food waste, household waste, and the fruit and vegetables from plants.

### Once Per Month Bulk Collection Items

These items should be placed for collection the fourth full week of the month. (A calendar of collection was provided with your carts.)

Furniture - sinks, tubs, toilets w/tank removed, chairs, sofas, beds, dressers, etc.

Building materials: lumber with nails removed or bent down, metal, pipes, etc. All material shall be less than 4' in length. Small amount of small auto parts in container – no oil or oil filters

Hay or straw, stone, rocks, concrete, sod, sod/soil mix or soil in containers- less than 80 pounds per unit, metal in containers, pipes (less than 4' in length).

Tree stumps, roots, or shrubs with intact rood balls (max. 80 pounds per item).

Paint disposal: Water based paints - use absorbent such as oil dry, kitty litter, sawdust, etc. to soak up paint. Place absorbent in container for disposal or let air dry outside. For oil based paints, see the hazardous materials information at [www.mmsd.com](http://www.mmsd.com) or call 225-2066.

Carpets-roll and tie in lengths of 4 feet or smaller -max weight of 80 pounds per roll. Please keep carpet dry.

Ashes in a paper bag.

Evergreen trees and wreaths (Christmas Season)

Other items not banned from the landfill.

### Items Banned from Landfill:

The following appliances are banned from the landfill: air conditioners, furnaces, dehumidifiers, water heaters, water softeners, dishwashers, washers, dryers, stoves/ovens, microwaves, freezers and refrigerators. Here are some websites with information on how to recycle these items:

[www.dnr.wi.gov/topic/recycling](http://www.dnr.wi.gov/topic/recycling)  
[www.recyclemorewisconsin.org](http://www.recyclemorewisconsin.org)  
[www4.uwm.edu/shwec/wrmd](http://www4.uwm.edu/shwec/wrmd)  
[www.refrigerantrecoveryinc.net](http://www.refrigerantrecoveryinc.net)  
[www.appliancerecycling.net](http://www.appliancerecycling.net)  
[www.refrigerant-depot.com](http://www.refrigerant-depot.com)

### Missed Pick-ups:

If you believe you have been missed by the regular garbage or recycle collection (which is subject to holiday adjustments) notify Waste Management at 888-960-0008 Monday through Friday 8am to 5pm. It can then be determined what action is necessary.

### Special Collections:

If you are in need of a special collection due to excess garbage or recycle materials, there are several options available.

You can:

1. Call Waste Management at 888-960-0008 for a quote.
2. Purchase a Bagster from the local hardware store. There are instructions on how to have it collected included with the purchase. There is a fee for collection.
3. Order a dumpster. A permit from the City of St. Francis is required to have a dumpster on your property or in the street.
4. Haul the excess waste to the landfill located at 10712 S. 124<sup>th</sup> Street, Franklin, WI 53132. Hours are Monday through Friday 7am-4:30pm (cash customers 7am -3pm); Saturday 7-11am (cash customers 7-10am).

During Holiday adjustments, you must place your carts out on your regular pick up day. The Contractor will pick up as soon as possible the next day.

Remember, yard waste, tires, car batteries, motor oil and toxic waste must not be placed in carts for removal. All these items (except toxic waste) may be brought to the St. Francis Recycle Center. The hours are listed in the recycling portion of the newsletter. Do not mix any other substance with the motor oil. Please note the hours of the drop-off site. Leaving items at times other than those posted is not permitted.

If you believe your garbage or recycle have been missed, or to schedule a special pick up contact  
 Waste Management at: 888-960-0008

## St. Francis Recycling Information

### Recycling Information:

Please recycle the following after rinsing the container clean as necessary:

- ◇ Plastic bottles and containers #1-7
- ◇ Glass bottles and jars
- ◇ Aluminum cans, tin or steel cans, foil and pie tins
- ◇ Paperboard from cereal, cracker, snack boxes, etc.
- ◇ Paper cardboard from cartons, dairy and juice containers
- ◇ Flattened cardboard
- ◇ Junk mail
- ◇ Phone books
- ◇ Magazines, Newspapers, Office Paper
- ◇ Brown paper bags
- ◇ Rigid Plastics

Place your cart on the opposite side of the driveway from your garbage cans/cart. For alleys, place your recycling cart at least three (3) feet to the side of your garbage cart and as far away from the garage as possible without blocking the alley. The recycling cart must be out at the street or alley for it to be picked up. **Cart must be out by 6am.**

State law has changed in regards to the recycling of electronic equipment. Beginning September 1, 2010, it is illegal to dispose of:

- ◇ Consumer computers, Consumer printers and printer/fax/copier/scanner combinations
- ◇ Consumer video display devices, including televisions, laptop computers and computer monitors with displays of at least 7" in the longest diagonal direction
- ◇ Computer peripherals
- ◇ Fax machines
- ◇ DVD players, VCR's and other video players (i.e. DVR's)
- ◇ Phones with video displays (i.e. cell phones)

***When purchasing new electronics, discuss recycling options with the place of purchase.***

Also, the City has posted on their website [www.stfranciswi.org](http://www.stfranciswi.org) other locations to recycle equipment

### City Recycling Center:

2125 East Bolivar Avenue  
Yard Waste, Tires, Motor Oil & Vehicle, Batteries

### Proof of Residency Required

#### Summer Hours:

April 1st-October 31st Monday 4:00-7:00 p.m. Wednesday 9:30---11:30 a.m. Saturday 10:00 a.m.-3:00 p.m.

#### Winter Hours:

November 1st-March, 31st Monday 4:00---6:00 p.m. Wednesday Closed Saturday 11:00 a.m.-2:00 p.m.

This is a self-help facility. Accommodations for disabled persons are available.

NOTE: Branches should be left as long as possible. Do not mix grass, leaves, twigs, branches-they are stored separately. Containers must weigh less than 50 pounds. Sod or, sod/soil mix, hay or straw are not yard waste and collected on bulk collection week.

### Special Yard Debris Pick-ups:

Brush or tree stumps can be picked up by the City for a fee. Call the Engineering Department for more information.

## BULK COLLECTION WEEKS

June 22nd ◇ July 27th ◇ August 24th ◇ September 21st ◇ October 26th ◇  
November 23rd ◇ December 28th

## Mayor's Letter Continued From Page 1

**WELCOME INTERNS!** I would like to welcome interns Trevor Wattawa and Catie Jo Boknevitz both St. Norbert's College students and St. Francis residents who will be working on Business and Community connection projects together with me over the summer. One of their projects will involve getting an effort started and rallying together our business community and individuals to ask John McGivern and MPTV to schedule St. Francis sometime in 2016 to be featured on the "Around the Corner" TV program.

**MARK YOUR CALENDARS - NEW EVENT FALL 2015:** October 25<sup>th</sup> 2015 will feature the first annual "Fall Harvest Fest" in the City of St. Francis. Festivities will take place in and around the new St. Francis Civic Center which will be celebrating the year anniversary of its dedication on that day. If you are interested in more details or would like to be involved call Mayor CoryAnn at 414-399-0797. We also would like your input on "Trick or Treat" for 2015, give me a call or drop me a note at the Civic Center in my mailbox or email me what date you would like to see Trick or Treat on or what times you think work best.

**FINAL FEW THOUGHTS:** I want to acknowledge and congratulate Donna Freichels of St. Francis on her retirement after 35 years of volunteering with the Cudahy-St. Francis Little League Baseball Association.

John Vugrinovich, a long time Alderman who continues his volunteerism to our City, will be going on the Honor Flight on June 6<sup>th</sup>, congrats John and have a great time!

Thank you to everyone who is participating in another successful Citizens Academy with our St. Francis Police Department, this program offers an amazing insight into Police work and public safety!

Our new Civic Center continues to be utilized for meetings and gatherings in our Community by surrounding agencies, organizations and schools. Please contact us if you have any questions on using our conference, meeting, or training rooms.

Our Vretenar Park Band shell is going to be repaired soon, so you will see some activity there, it is 38 years old and still going strong.

**SENIORS 65 AND OVER:** You can get a "Go Pass" from Milwaukee County for free rides from Milwaukee County transit. They will process applications and hand out free passes at the MCTS Administration Building (1942 N. 17<sup>th</sup> Street, Milwaukee) between the hours of 9a.m. and 2p.m. Monday thru Friday. For other questions please visit RideMCTS at 414-343-1700. (County Board Supervisor Pat Jursik, provided this reminder to me)

**IN CLOSING:** Once again, I have warm wishes for all of you and optimism for beautiful summer months that continue into the Fall. Please attend our Memorial Day Ceremony, graciously coordinated by our Memorial Commission on May 25<sup>th</sup> at 8:30a.m. at the St. Francis Veteran's Memorial on Nicholson Ave. Also, Please plan to join us for the 4<sup>th</sup> of July parade and activities at the Park and take advantage of all our activities scheduled at Vretenar Park this summer!

## Welcome New Businesses

Recently St. Francis has seen the addition of new businesses in our Community. We are proud to be the new home of the 42 Ale House, Lovely Salon and Wing Stop #855. Please take an opportunity to stop in and visit when you have the chance. All three of these businesses have made significant improvements and investments to their facilities and buildings to serve customers.



### **42 Ale House, 3807 S. Packard Ave.**

This Pub opens nightly at 5p.m. with wood fired pizza, beer, gaming and other menu items. Many interior improvements have been made and more screens have been added including changes to a party room open on weekends and for special events



### **Lovely Salon, 3724 S. Kinnickinnic Ave.**

This premier full concept Aveda salon focusing on beauty, health and personal care is a "Lovely" addition to Kinnickinnic in St. Francis. Lovely Salon established itself in Bay View and has expanded to St. Francis purchasing & remodeling the building on KK.



### **Wing Stop, 2300 E. Layton Ave.**

Local owners of the Subway in Whitnall Plaza have converted the former Blockbuster space into a Wing Stop. Wing Stop is known for wings freshly prepared start to finish per order.



City of Saint Francis  
3400 E. Howard Ave.  
Saint Francis, WI 53235

PRSR STD  
ECRWSS  
U.S. POSTAGE  
PAID  
EDDM RETAIL

\*\*\*\*\*ECRWSS\*\*\*\*\*

**Postal Customer  
Saint Francis, WI 53235**

MEETING CALENDAR

**City Administrator**

Tim Rhode  
(414) 481-2300 Ext 4304  
tim.rhode@stfranwi.org

**City Clerk/Treasurer**

Anne B. Uecker, MMC/  
WCPC  
(414) 481-2300 Ext 4305  
anne.uecker@stfranwi.org

**Health Department**

Kathy Scott,  
Public Health Administrator  
(414) 481-2300 Ext 4313  
SFHD@stfranwi.org

**Fire Department**

Frank Lockwood, Chief  
(414) 483-4424  
frank.lockwood@stfranwi.org

**Police Department**

Brian Kaebisch, Chief  
(414) 481-2232  
brian.kaebisch@stfranwi.org

**St. Francis Library**

4230 S. Nicholson Avenue  
(414) 481-7323  
www.stfrancislibrary.org

**Building Inspector**

Craig Vretenar  
(414) 481-2300 Ext 4311  
craig.vretenar@stfranwi.org

**Engineering Department**

Melinda Dejewski, PE,  
City Engineer/Director of  
Public Works  
(414) 481-2300 Ext 4319  
engineering@stfranwi.org



**June**

- June 1st, Monday: 6pm 4th of July Committee
- June 2nd, Tuesday: 6pm Finance, 6:45pm License, 7pm Common Council
- June 4th, Thursday: 4pm Police & Fire Commission
- June 8th, Monday: 4pm Municipal Court
- June 9th, Tuesday: 4pm Economic Development & 5:30pm Board of Public Works
- June 10th, Wednesday: 5pm Library Board (at the Library)
- June 11th, Thursday: 7:30am - Board of Health
- June 15th, Monday: 6pm Fourth of July Committee
- June 16th, Tuesday: 6pm Legislative, 6:45pm License, 7pm Common Council
- June 18th, Thursday: 6:30pm Aesthetic Control Board (meets at the call of the Chair)
- June 22nd, Monday: 4pm Municipal Court
- June 23rd, Tuesday: 6pm Community Development Authority
- June 24th, Wednesday: 6pm Plan Commission
- June 25th, Thursday: 7pm Zoning Board of Appeals (meets at the call of the Chair)

**July**

- July 2nd, Thursday: 4pm Fire & Police Commission
- July 3rd \*\* City Hall Closed \*\* **NO** Delay in Garbage & Recycling
- July 7th, Tuesday: 6pm Finance, 6:45pm License, 7pm Common Council
- July 8th, Wednesday: 5pm Library Board (at the Library) & 6:30pm Park Commission
- July 13th, Monday: 4pm Municipal Court
- July 14th, Tuesday Economic Development & 5:30pm Board of Public Works
- July 15th, Wednesday 6pm Traffic Safety
- July 16th, Thursday: 6:30pm Aesthetic Control Board (meets at the call of the Chair)
- July 20th, Monday: 6pm 4th of July Committee
- July 21st, Tuesday: 6pm Legislative, 6:45pm License, 7pm Common Council
- July 22nd, Wednesday: 6pm Plan Commission
- July 23rd, Thursday: 7pm Zoning Board of Appeals (meets at the call of the Chair)
- July 27th, Monday: 4pm Municipal Court
- July 28th, Tuesday: 6pm Community Development Authority

**August**

- August 4th, Tuesday: 6pm Finance, 6:45pm License, 7pm Common Council
- August 6th, Thursday: 4pm Fire & Police Commission
- August 10th, Monday: 4pm Municipal Court
- August 11th, Tuesday Economic Development & 5:30pm Board of Public Works
- August 12th, Wednesday: 5pm Library Board (at the Library)
- August 18th, Monday: 4pm Municipal Court
- August 18th, Tuesday: 6pm Legislative, 6:45pm License, 7pm Common Council
- August 20th, Thursday: 6:30pm Aesthetic Control Board (meets at the call of the Chair)
- August 24th, Monday: 4pm Municipal Court
- August 25th, Tuesday: 6pm Community Development Authority
- August 26th, Wednesday: 6pm Plan Commission

**All meetings are held at the St. Francis Civic Center unless noted otherwise.**

**Meeting times and dates are subject to change.**

**Please visit [www.stfranciswi.org](http://www.stfranciswi.org) for the most accurate meeting information.**